



Salisbury BID

May 2018

29/04/2018 to 26/05/2018



REGION - South West

Sunday to Saturday

COUNT TYPE: Footfall

Monthly Footfall

Benchmark calculations (Year on Year and Month on Month) have been calculated using like for like data sets (only those counters available in both comparison periods) to ensure statistical accuracy

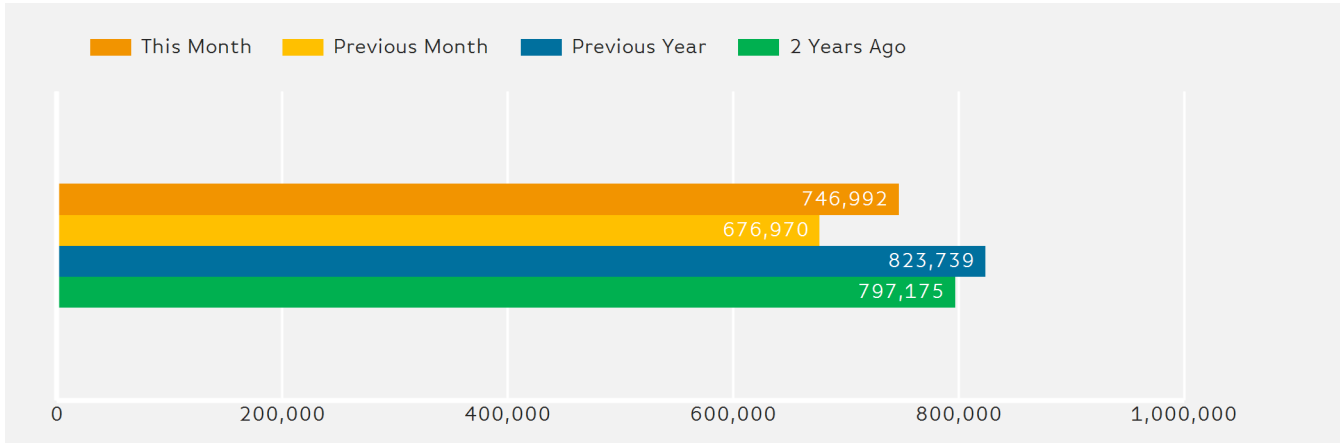
	Year to Date % Change		Year on Year % Change		Month on Month % Change	
	2018	2017	2018	2017	2018	2017
Salisbury BID	▼ -13.7 %	▲ 7.9 %	▼ -9.3 %	▲ 3.3 %	▲ 10.3 %	▲ 1.0 %
South West	▼ -3.1 %	▼ -1.3 %	▼ -1.3 %	▼ -2.7 %	▲ 3.8 %	▼ -5.3 %
High Street Index(South East)	▼ -4.9 %	▲ 0.1 %	▲ 0.1 %	▼ -2.6 %	▲ 6.3 %	▲ 0.1 %
UK	▼ -3.4 %	▼ -0.1 %	▲ 0.5 %	▼ -2.0 %	▲ 4.5 %	▼ -1.0 %

Headlines

- Footfall for the year to date is 13.7% down on the previous year.
- The number of visitors counted for month commencing 29 April 2018 was 746,992.
- The busiest day in month commencing 29 April 2018 was Saturday 26 May with 39,803 visitors.
- The peak hour of the month was 14:00 on Saturday 26 May 2018 with footfall of 5,148

Footfall by Month

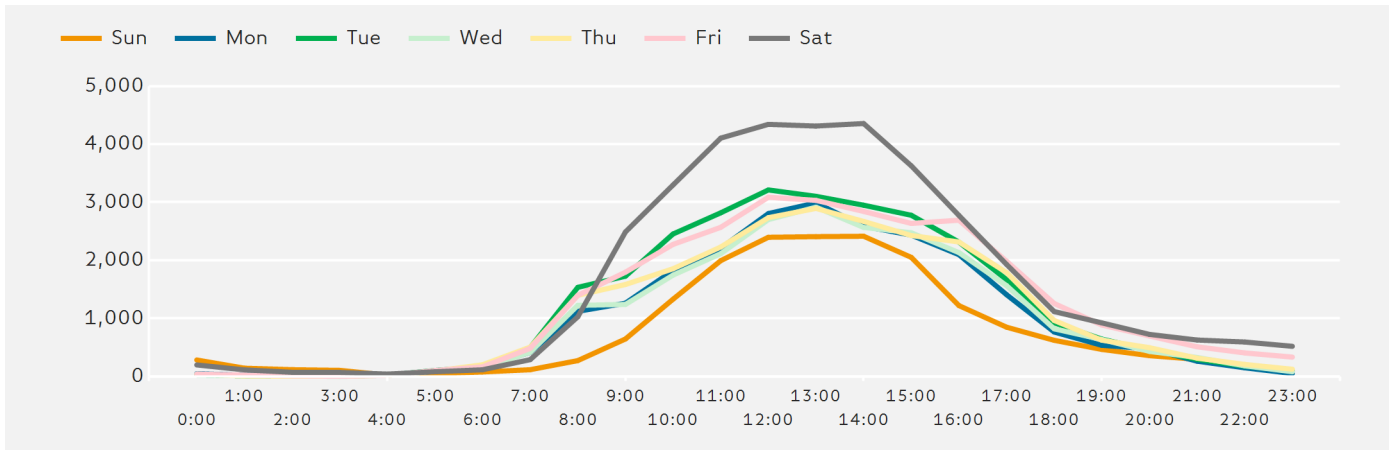
Figures shown below are calculated using monthly totals.



Springboard follows the BRC calendar consisting of complete weeks (Sun- Sat or Mon-Sun) to ensure that the same day is comparable each week. Each month is compiled from a set of full weeks which results in a calendar of a 4 week month, 4 week month, 5 week month pattern.

Footfall by Hour

The figures shown below are calculated using a weekly average



Weather



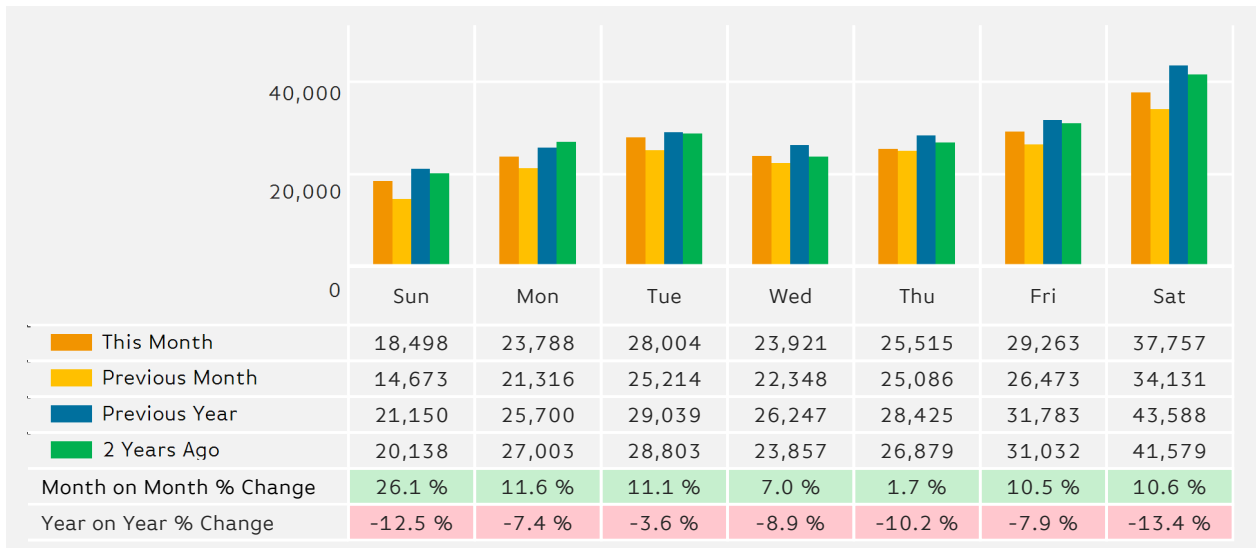
Number of days this month	15	6	7
Number of days same month last year	10	12	6

Average Temperature

Average Temperatures	Maximum Temperature	Minimum Temperature
2018	18.3	6.9
2017	17.2	8.4

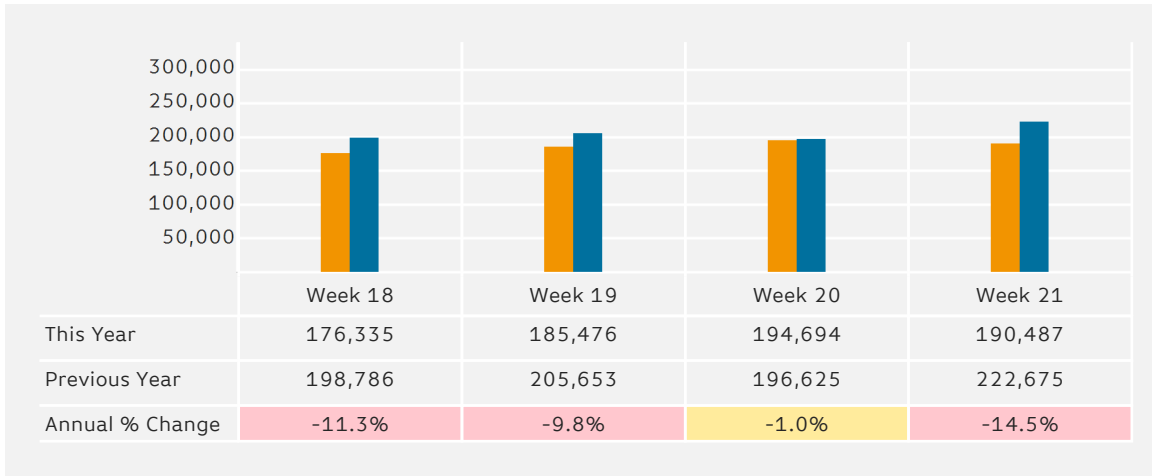
Footfall by Day

The figures shown below are calculated using weekly averages.



Footfall by Week of Month

The figures shown below are calculated using weekly totals.



Footfall by Location

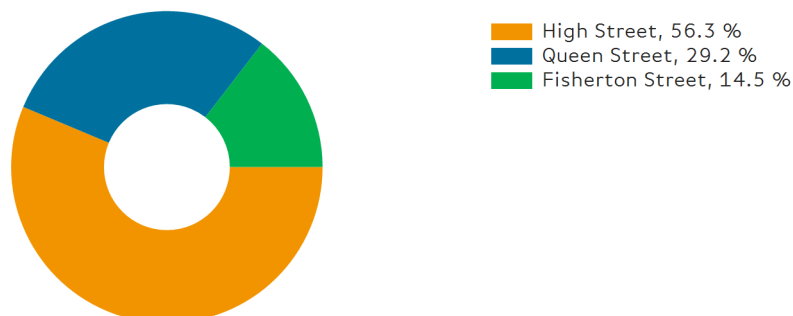
The figures shown below are calculated using weekly averages.



Footfall by location

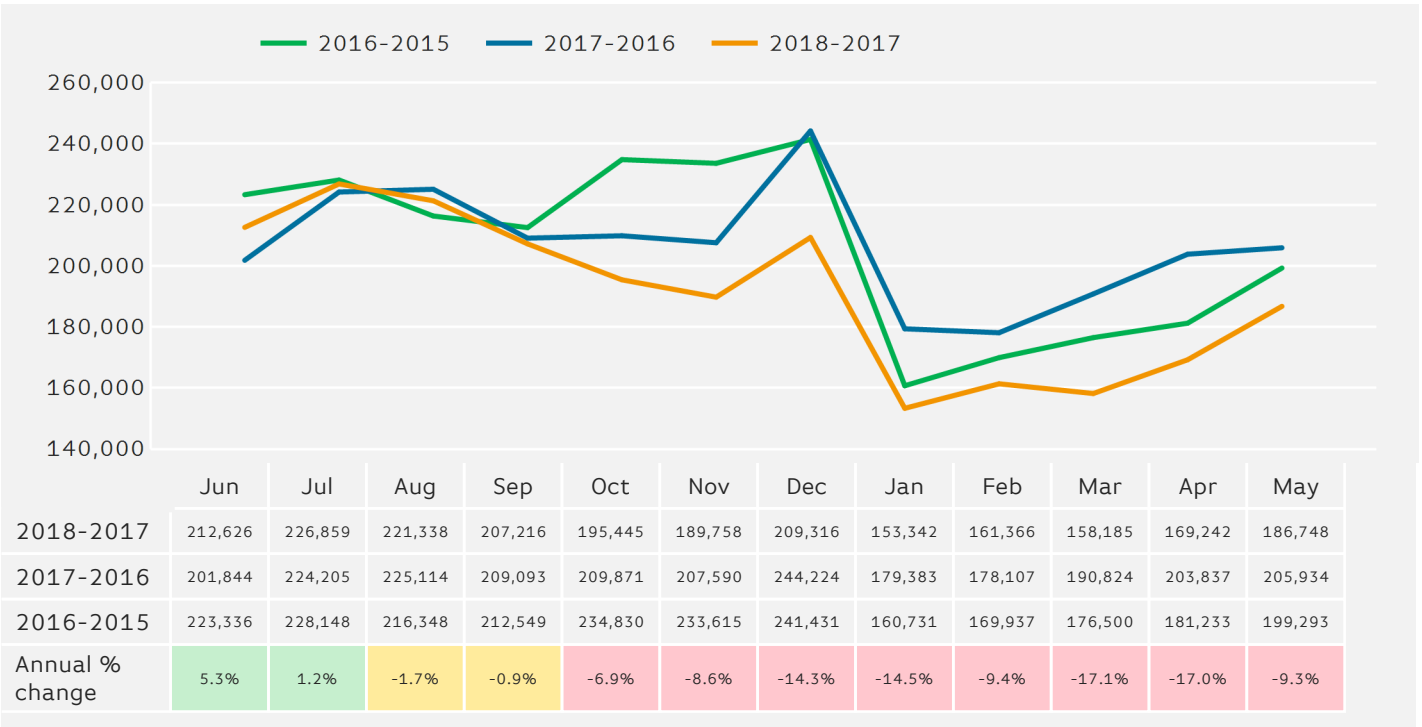
Counting By Location - Main Locations Only

The figures shown below are based on weekly averages



Footfall - Rolling 12 Months

The figures shown below are calculated using weekly averages.



Notes

Year to Date % Change is the annual % change in footfall from January of this year compared to the same period last year. January, 2018 to May, 2018 Vs January, 2017 to May, 2017

Year on Year % Change is the % change in footfall for this month compared to the same week in the previous year. May, 2018 Vs May, 2017

Month on Month % Change is the % change in footfall for this Month from the previous Month. 5 2018 Vs 4 2018